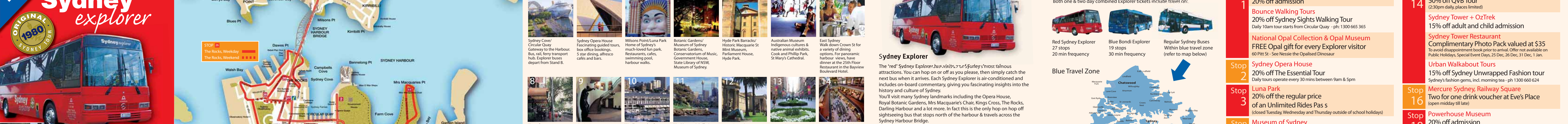


Sydney explorer



STOP 26
The Rocks, Weekday
The Rocks, Weekend

Catch the 244 bus to Chowder Bay from Stand A, Carrington St, Wynyard.

STOP 1
Taronga Zoo
20% off admission
Bounce Walking Tours
20% off Sydney Sights Walking Tour
Daily 10am tour starts from Circular Quay - ph: 1300 665 365
National Opal Collection & Opal Museum
FREE Opal gift for every Explorer visitor
60 Pitt St - See Nessie the Opalised Dinosaur

STOP 2
Sydney Opera House
20% off The Essential Tour
Daily tours operate every 30 mins between 9am & 5pm

STOP 3
Luna Park
20% off the regular price
of an Unlimited Rides Pass
(closed Tuesday, Wednesday and Thursday outside of school holidays)

STOP 4
Museum of Sydney
50% off admission
Botanic Gardens Restaurant
One complimentary main course when another main course of equal or greater value is purchased
Up to \$30 value. Offer not available on Public Holidays, 25 Dec, 26 Dec, 31 Dec and 1 Jan

STOP 5
Hyde Park Barracks Museum
50% off admission

STOP 6
Australian Museum
Buy one get one free
General Museum admission only
Open seven days a week, 9:30am - 5:00pm

STOP 8
Sydney Jewish Museum
20% off admission

STOP 9
Elizabeth Bay House
50% off admission
Open Fri-Sun, 9:30am-4pm

STOP 12
Pavilion on the Park
10% off total bill
Offer not available on Public Holidays, 25 Dec, 31 Dec and 1 Jan.

STOP 14
Queen Victoria Building
50% off QVB Tour
(2:30pm daily, places limited)
Sydney Tower + OzTrek
15% off adult and child admission
Sydney Tower Restaurant
Complimentary Photo Pack valued at \$35
To avoid disappointment book prior to arrival. Offer not available on Public Holidays, Special Event Days, 25 Dec, 26 Dec, 31 Dec, 1 Jan.

STOP 16
Mercure Sydney, Railway Square
Two for one drink voucher at Eve's Place
(open midday till late)

STOP 18
Powerhouse Museum
20% off admission
Does not apply to exhibitions with special charges

STOP 19
Simon Johnson - Purveyor of Quality Foods
10% off any purchase from Pymont Store
(excludes sale items and hampers)

STOP 21
National Maritime Museum
20% off adult & child admission
Navy Ticket and Big Ticket only. Includes Submarine, Destroyer, HMB Endeavour & tall ship James Craig

STOP 22
Harbour Jet
20% off general admission
Australian Travel Specialists
10% off Blue Mountains Day Tour
Includes hotel pickup, coach travel, entry to Featherdale Wildlife Park, Lunch and River Cruise (plus visit to the 3 sisters)

STOP 24
Sydney Wildlife World
15% off adult & child admission
Sydney Aquarium
15% off adult & child admission

STOP 27
The Rocks Walking Tours
20% off a 90 minute guided walking tour
Daily tours depart 23 Playfair St, The Rocks - Ph: 9247 6678
Suzannah Place Museum
50% off admission
Open Sat & Sun 10am-5pm, daily in January & school holidays

1 Sydney Cove/ Circular Quay Gateway to the Harbour. Bus, rail, ferry transport hub. Explorer buses depart from Stand B.

2 Sydney Opera House Fascinating guided tours, box office bookings. 5 star dining, alfresco cafes and bars.

3 Milsions Point/Luna Park Home of Sydney's much-loved fun park. Restaurants, cafes, swimming pool, harbour walks.

4 Botanic Gardens/ Museum of Sydney Botanic Gardens, Conservatorium of Music, Government House, State Library of NSW, Museum of Sydney.

5 Hyde Park Barracks/ Historic Macquarie St Mint Museum, Parliament House, Hyde Park.

6 Australian Museum Indigenous cultures & native animal exhibits. Cook and Phillip Park, St Mary's Cathedral.

7 East Sydney Walk down Crown St for a variety of dining options. For panoramic harbour views, have dinner at the 25th Floor Restaurant in the Bayview Boulevard Hotel.

8 Kings Cross Jewish Museum. Restaurants, cafes, nightclubs and weekend markets.

9 Elizabeth Bay House/ El Alamein Fountain Beautifully restored Greek Revival Villa built 1835 - "Once the finest house in the colony".

10 Woolloomooloo Bay 5 star dining and home to the stars. Garden Island. Royal Australian Navy, Harry's Café de Wheels - pie stand to the stars.

11 Mrs Macquarie's Chair Spectacular views of Sydney Harbour: Fort Denison, Shark Island, Admiralty House.

12 Art Gallery of NSW Extensive collection of Australian, Aboriginal & contemporary art.

13 Wynyard Station Business heart of Sydney. Short walk to the Cenotaph, Martin Place.

14 Queen Victoria Building QVB; a beautiful way to shop. Located near Town Hall, Pitt St Mall and Sydney Tower.

15 Anzac War Memorial/ World Square Short walk to Hyde Park Anzac War Memorial, World Square, Oxford St.

16 Central Station/ Eddy Ave Suburban, country and interstate trains. Interstate bus terminal.

17 Chinatown Restaurants, specialty shops, Market City, Entertainment Centre.

18 Powerhouse Museum Exhibits cover Science, Technology, Decorative Arts, Design, and Social History.

19 Sydney Fish Market A short walk to Sydney's freshest fish and great seafood cafes.

20 Star City Sydney's casino right in the heart of Pymont Bay. Lyric Theatre, coach terminal, restaurants and scenic harbour board walk.

21 National Maritime Museum Australia's biggest collection of ships, historical vessels and nautical memorabilia.

22 Sydney Convention & Exhibition Centre Harbourside shopping, Sydney Convention and Exhibition Centre.

23 Imax/Chinese Gardens Family friendly Darling Harbour. Free child entertainment within Tumbalong Park.

24 Sydney Aquarium/ Sydney Wildlife World Sydney Aquarium - see over 12,000 all Australian aquatic animals. Sydney Wildlife World - Australia's wildest new attraction is NOW OPEN.

25 Passenger Terminal Only a short walk to King St Wharf marina and restaurants.

26 The Rocks Home of Sydney's first European settlement. Garrison Church, Observatory Hill, The Rocks Markets.

27 Sydney Visitor Centre/ Argyle Cut Maps, guides, tours, booking office and more.

Sydney Explorer
The 'red' Sydney Explorer bus visits Sydney's most famous attractions. You can hop on or off as you please, then simply catch the next bus when it arrives. Each Sydney Explorer is air-conditioned and includes on-board commentary, giving you fascinating insights into the history and culture of Sydney. You'll visit many Sydney landmarks including the Opera House, Royal Botanic Gardens, Mrs Macquarie's Chair, Kings Cross, The Rocks, Darling Harbour and a lot more. In fact this is the only hop on hop off sightseeing bus that stops north of the harbour & travels across the Sydney Harbour Bridge.

All day, every day
This service can be picked up at any stop along the route at 20-minute intervals. The first departure from Circular Quay is at 8:40am and the last 'round trip' is at 5:20pm. The last service will return you to Circular Quay at 7:20pm. You can hop on or off this service at any of the distinctive 'red' Explorer bus stops. If you prefer to stay on the bus, the full circuit will take approximately 2 hours to complete. On board commentary details the attractions near each bus stop for you to explore at your leisure. There's no need to book, just jump onboard and buy your ticket from the driver.

Fares	Adult	Child	Family
One day Combined Sydney & Bondi Explorer Ticket	\$39	\$19	\$97
Two day Combined Sydney & Bondi Explorer Ticket	\$68	\$34	\$170

(two day ticket can be used any two days within an eight day period)
Child 4-15 years of age. Children under 4 travel free
Family 2 adults and any number of children from the same immediate family
All prices are in Australian dollars and are valid until 31 March 2009

Chowder Bay
Chowder Bay is situated on the foreshore of Sydney Harbour at Mosman. You can catch the 244 bus to Chowder Bay and discover one of Sydney's secret treasures. Chowder Bay offers a range of family friendly activities including walking tracks, beaches, artist studios, kayaking and scuba diving. Take in the spectacular harbour views while dining at one of the contemporary cafes or 5 star restaurants. 30 minute bus trip - accessible on Explorer ticket. The 244 service operates Monday to Friday from: Stand A, Carrington St, Wynyard at 6:45, 7:15, 7:38, 8:10, 8:33, 9:38, 10:38, 11:38, 12:38, 1:38, 2:38, 3:38, 4:37, 5:20, 5:54, 6:34

Where to buy Explorer tickets

- Onboard any Explorer bus
- TransitShops at: Circular Quay (cnr Loftus and Alfred St) Wynyard Station (Carrington St entrance) Queen Victoria Building (York St entrance)